



UD TRUCKS



Going the Extra Mile

UD Genuine Parts - Starter Motor

GENUINE VS NON GENUINE

A Genuine UD starter provides the perfect engagement between the motor and the ring gear on the flywheel. This greatly reduces the risk of damage to either component. Many non-genuine replacements simply do not live up to UD standards. If you're having starter issues and think the starter motor may be the problem, the first choice would be to fit a genuine UD starter.

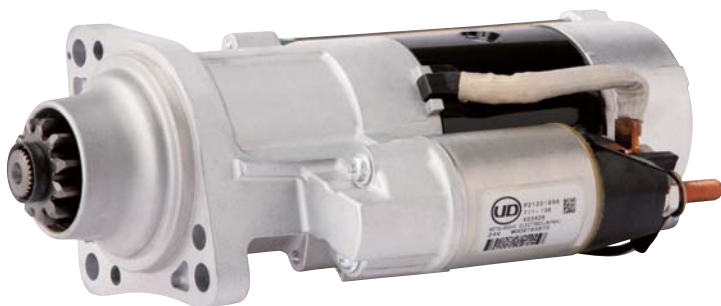
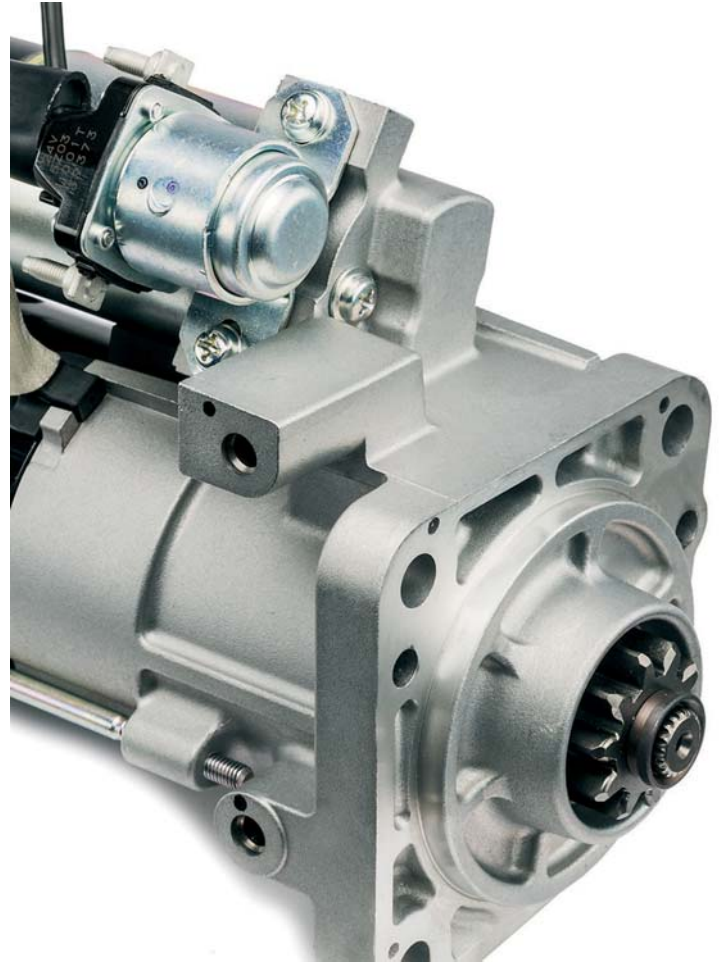
UD Genuine Parts are guaranteed to:

- Meet UD Trucks vehicle specifications.
- Fit perfectly and work right the first time.
- Deliver superior quality.
- Ensure that your UD Truck stays 100% UD, through and through.

We know that the kW output claimed on our parts can always be achieved. This is not always the case with non-genuine parts which cannot sufficiently cope with the tough demands of truck operators.

When you use Genuine UD Parts, you can count on guaranteed quality, value throughout the life cycle and improved productivity of your truck. Using non-genuine parts can become an expensive experiment. So, why take the risk? The only way to keep your truck 100% UD is by using Genuine UD Parts that are backed by extensive testing and analysis and provided through our global parts supply network.

- A perfect start up of your vehicle day after day.
- Preserve the vehicles battery.
- Especially designed and thoroughly tested to meet our highest quality standards



FEATURES & BENEFITS

FEATURES

Complete and ready to install

Perfect fit for engagement between the starter and the flywheel ring gear

Adapted Clutch Function

Testing

BENEFITS

○ Uptime – Shortest possible downtime in the workshop

○ Safety – Reduces the risk of damage to either the pinion or the ring gear. Damage on either side could cause expensive repairs

○ Reliability – Consistent performance

○ Limited wear and tear thanks to genuine UD parts

○ Provides the best protection in case of an issue with the starter

○ Longevity – Extended service life for the starter motor which improves the operators total cost of ownership

○ Peace of mind - UD genuine starters are designed in line with UD quality and safety standards

○ Dependability - Submitted to extensive testing which guarantees quality and functionality

○ Durability - Exposed to testing across a wide variety of demanding applications and tough conditions

WHAT IS IT & HOW DOES IT WORK?

A Genuine UD starter is a strong electric motor. Its function is to convert electrical energy into mechanical energy, enough to start the engine by turning the flywheel and crankshaft. It is mounted in the flywheel housing. When the operator starts the engine, by turning the ignition key, an electrical current flows from the battery to the starter motor. The starter pinion on the motor is in contact with the teeth of the engine flywheel. The starter motor slowly starts to rotate. This rotation causes movement in the flywheel ring-gear and the crankshaft. This is when the engine “turns over” and starts.

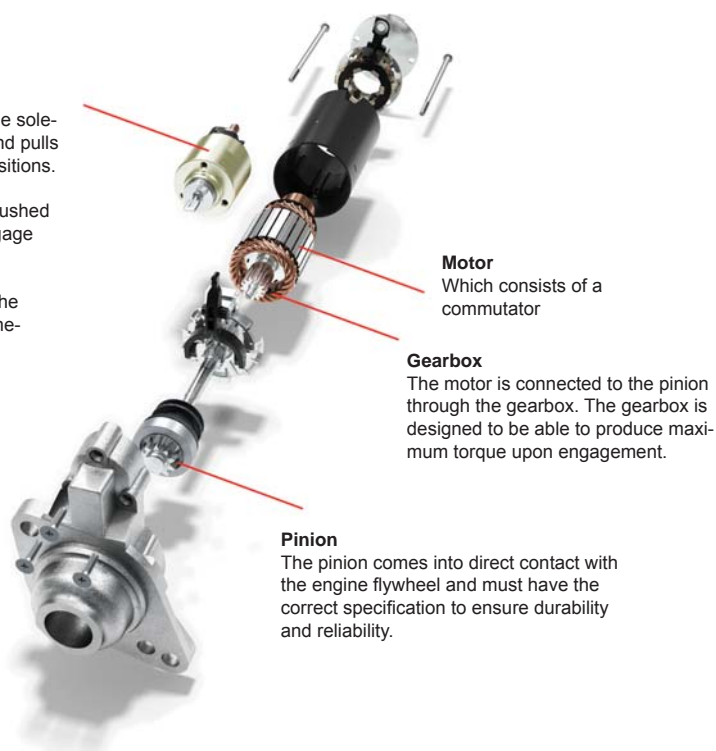
Upon starting and reaching a desired speed the starter automatically disengages and returns to its pre-set position. Starter motors work intensively in short “start-up” periods so must be extremely reliable to ensure maximum vehicle uptime. Like all Genuine UD parts they are designed specifically to seamlessly operate with other electrical and mechanical components of the truck.

Solenoid

The ignition controls the action of the solenoid. The solenoid action pushes and pulls the starter pinion into one of two positions.

Upon engine starting the pinion is pushed toward the flywheel ring gear to engage and facilitate rotation.

Electricity from the battery powers the solenoid which in turn creates the mechanical power in the flywheel.



Motor

Which consists of a commutator

Gearbox

The motor is connected to the pinion through the gearbox. The gearbox is designed to be able to produce maximum torque upon engagement.

Pinion

The pinion comes into direct contact with the engine flywheel and must have the correct specification to ensure durability and reliability.



VALUE OF UD SERVICE

Checks to perform when changing a starter motor

- Worn Teeth on the Pinion Gear
- Worn Teeth on the Flywheel
- Loose Mountings.

Also check for loose mountings on your starter motor. General wear and tear on the bolts supporting the starter motor could be responsible, and it is best to get the issue fixed before it causes significant damage to the starter motor or flywheel.

UD Trucks workshops have all the efficient diagnostics systems, special tools and the very latest service literature available. We only use parts designed for your truck – Genuine UD Parts. All this means your truck has the shortest possible downtime and is back on the road quickly.

We go the extra mile for you

UD Genuine Parts is specially designed and tested for UD Trucks which guarantee quality, value and productivity.



TAN CHONG INDUSTRIAL EQUIPMENT SDN BHD (013285-X)

A subsidiary of Tan Chong Motor Holdings Berhad (12969-P)

Lot 3, Jalan Perusahaan Satu, 68100 Batu Caves, Selangor Darul Ehsan, Malaysia

Tel: 03-6189 9832 Fax: 03-6189 9336 Email: enquiry@tcie.com.my Website: www.tcie.com.my