

NISSAN DIESEL AMERICA, INC.

TECHNICAL BULLETIN EN-26 (Rev. C)

DATE: MARCH 29, 2004
MODEL YEAR: 1999 ~ 2004
CHASSIS MODEL: UD1200/UD1400/UD1800CS
ENGINE MODEL: FD46TA
BULLETIN NUMBER: EN-26 (Rev. C)
**FILE IN THE ENGINE SECTION OF THE TECHNICAL BULLETIN BINDER
(DISCARD PREVIOUS BULLETIN REVISION DATED DECEMBER 4, 2002)**

FD46TA EXHAUST MANIFOLD AND MOUNTING HARDWARE UPDATE

REVISION EXPLANATION

The current studs, nuts and washers that connect the exhaust manifold to the cylinder head have been revised. The new parts are available through NDA Parts Operations and should be utilized when the exhaust manifold has been removed during repairs.

CHANGE NOTICE

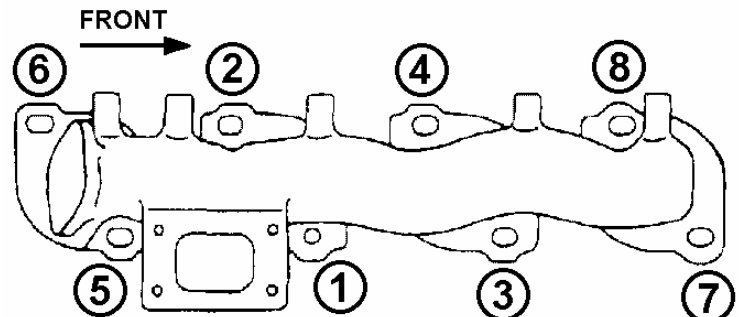
The exhaust manifold used in the FD46TA engines on vehicles prior to the Vehicle Identification Numbers shown below has changed. The studs, nuts and washers to attach the exhaust manifold have been revised. See Page 2 for details.

VEHICLE MODEL	CHASSIS SERIAL NUMBER	PRODUCTION DATE
UD1800CS	JNAMCU2H3YAC55224	NOVEMBER, 1999
UD1200A	JNAUXV1J1YA301015	DECEMBER, 1999
UD1200B	JNAUXV1J7YG401150	OCTOBER, 1999
UD1200C	JNAUXV1JXYA501164	DECEMBER, 1999
UD1400A	JNAUZV1J8YA351081	OCTOBER, 1999
UD1400B	JNAUZV1J1YA451278	OCTOBER, 1999
UD1400C	JNAUZV1J1YA551199	DECEMBER, 1999

SERVICE NOTICE

- For vehicles built *prior to* the VINs listed above use only the new part number exhaust manifold and mounting hardware when performing repairs to the exhaust manifold on FD46TA engines.
- For vehicles built *after* the VINs listed above, use only the new mounting hardware when performing repairs to the exhaust manifold on FD46TA engines.

Exhaust Manifold Stud Nut Torque:
25 ~ 32 lb-ft (33 ~ 44 N·m, 3.4 ~ 4.4 kg·m)

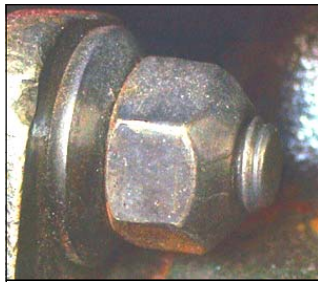


TIGHTEN THE EXHAUST MANIFOLD STUD NUTS TO THE SPECIFIED TORQUE IN THE NUMERICAL ORDER ILLUSTRATED ABOVE

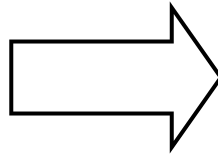
PARTS NOTICE

The affected part number changes are listed below.

PART NAME	FORMER PART NUMBER	NEW PART NUMBER	NUMBER REQUIRED
EXHAUST MANIFOLD	1400429D01	1400429D04	1
EXHAUST MANIFOLD STUD	1406531D00	14018Z5517	8
EXHAUST MANIFOLD GASKET	1403619D00	1403619D01	2
STUD NUT	1437201T00	0121100014	16
WASHER	1403896000	0131100224	8
TURBO STUD	1441417D00	1441431N00	4
TURBO STUD NUT	N/A	2060201M00	4
TURBO GASKET	N/A	1441517D01	1



FORMER VERSION



NEW VERSION

EXHAUST MANIFOLD STUD



FORMER VERSION



NEW VERSION



THE INFORMATION CONTAINED IN THIS BULLETIN SHOULD NOT BE INTERPRETED AS THE BASIS FOR WARRANTY CLAIMS

FOR THE INDICATED PERSONNEL BELOW, PLEASE READ, INITIAL, AND ROUTE TO THE FOLLOWING:

X	SERVICE MANAGER	X	WARRANTY MANAGER	X	SERVICE TECHNICIANS INITIAL BELOW:		
X	PARTS MANAGER	X	SHOP FOREMAN				