

SUBJECT: 2011 through 2013 MY AHI Manifold Replacement

Department: Service
 Section: Engine
 Model(s): GH7
 Model Year(s): 2011, 2012, 2013
 Effective Date: 6/24/2019
 Form #: TSB EN-49 Rev #: B
 Supersedes: 2/1/2013

Purpose:

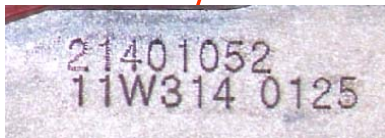
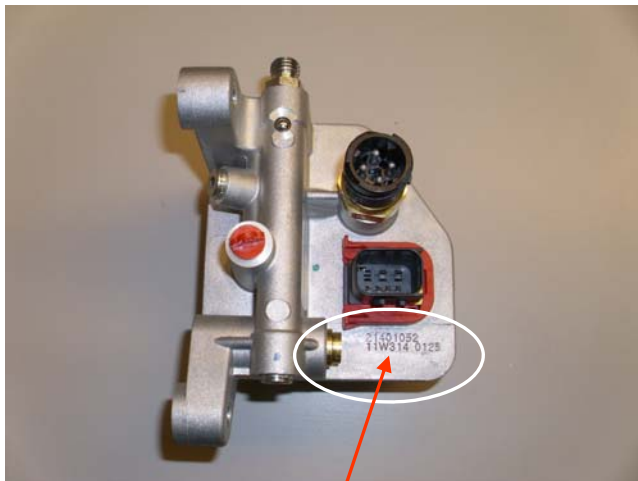
To advise dealers there are two AHI Manifolds available. Installation of the incorrect AHI Manifold may result in subsequent failure and progressive damage to the SCR assembly.

Procedure:

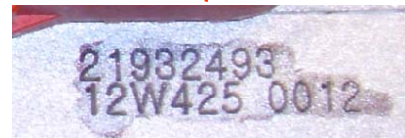
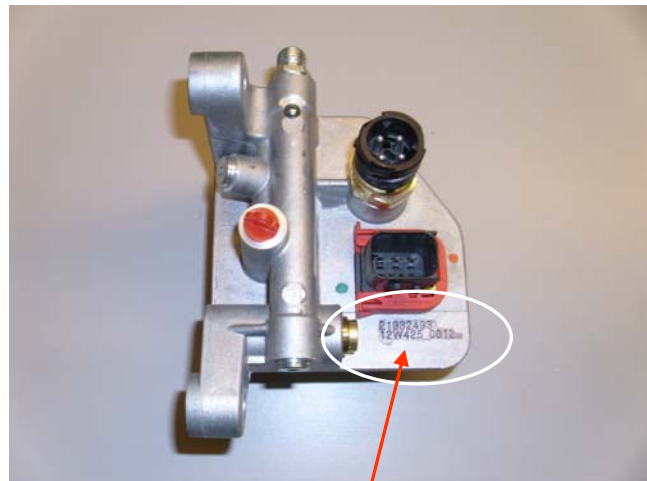
Verify if the Air Purge Kit has been installed by the presence of the air regulator valve located on the cross-member behind the transmission as shown below:



The correct AHI Manifold can be identified by the last 8 digits of the Part Number stamped on the housing



5221401052 **WITHOUT**
Air Purge Kit Installed



5221932493 **WITH**
Air Purge Kit Installed
5221870672
5222452554
5223185535
5223220417